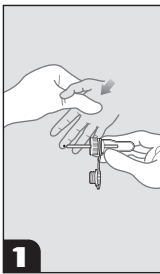
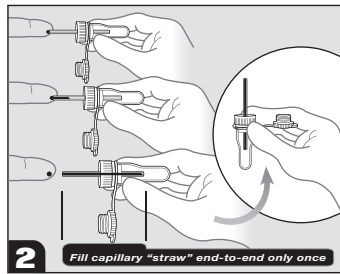


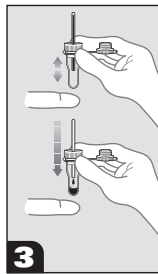
Instructions: SAFE-T-FILL® Capillary Blood Collection Tube



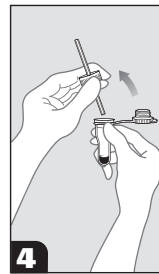
1 Hold the open end of the SAFE-T-FILL® Capillary Blood Collection Tube close to the puncture site at a horizontal or slight angle so that the end of the capillary "straw" touches **only** the blood drop.



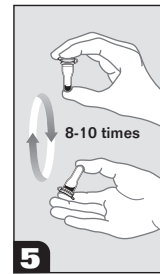
2 The blood drop will be pulled into the straw via capillary action. Repeat drawing capillary blood from the puncture site until the capillary straw is **filled end-to-end only once**. A complete end-to-end fill of the capillary straw is equal to the stated fill volume. Invert the tube to a vertical position to allow the blood to flow down into the microtube.



3 Gently tap the bottom of the microtube on a soft surface (finger or palm) to drop the blood from the capillary straw into the microtube.

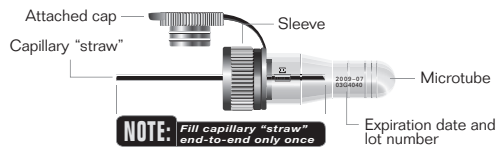


4 Remove the capillary straw together with its colored sleeve from the microtube and properly discard the capillary straw and colored sleeve in a biohazard container.



5 Close the microtube with attached cap. Mix by holding the tube between thumb and forefinger and inverting 8-10 times. Label the tube and process the sample according to your organization's guidelines.

RAM
SCIENTIFIC



RAM Scientific Customer Service at
1.800.535.6734 or visit us on the web at
www.ramsci.com

© 2005 RAM Scientific, Inc. All rights reserved.
SAFE-T-FILL® is a registered trademark of RAM Scientific, Inc.