

# SAFE-T-FILL<sup>®</sup> Blood Gas Capillary Tubes



Blood Gases • Electrolytes • CO-Ox • PKU testing • Neonatal Screening

## 100% Plastic

As mandated by the FDA, OSHA and the CDC (NIOSH)  
As outlined in CAP laboratory accreditation checklist

230  $\mu$ L

150  $\mu$ L

115  $\mu$ L

## Variety

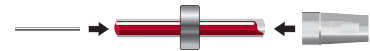
of sizes and heparin available

## Replaces

glass Natelson,<sup>®</sup>  
Caraway<sup>®</sup> and blood gas tubes

## Safer

than Mylar<sup>®</sup> coated  
glass tubes



*Fleas, magnets and end caps available*

## Overview



SAFE-T-FILL<sup>®</sup> Blood Gas Capillary Tubes are 100% plastic for safe capillary blood collection to meet all Federal and State laboratory safety compliance requirements. Used to collect capillary blood samples from finger sticks, heel sticks, or direct from a catheter,

these capillary tubes are ideal for replacing glass capillary, Natelson, and Caraway tubes. Available with either sodium or balanced heparin, and in a variety of sizes, SAFE-T-FILL Blood Gas Capillary Tubes may be used for blood gas analysis, tests for multiple analytes, or as a transfer device for PKU and POC testing. Blood Gas Capillary Tubes, end caps, mixing fleas and magnets are all sold separately and are available through all major laboratory supply distributors.

## About RAM Scientific

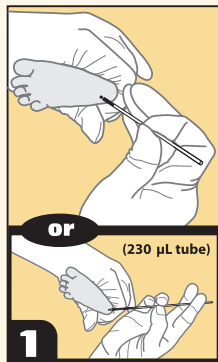
Founded in 1990, RAM Scientific provides high quality 100% plastic capillary blood collection devices. As the premiere source of safe micro blood collection systems for clinical and research applications, RAM Scientific is dedicated to pursuing safety in the laboratory. The SAFE-T-FILL product line's proprietary technology gives plastic the same capillary action as glass without the risks. SAFE-T-FILL blood gas tubes, capillary blood collection tubes, and micro hematocrit tubes are available for a wide range of applications.

**RAM**  
SCIENTIFIC

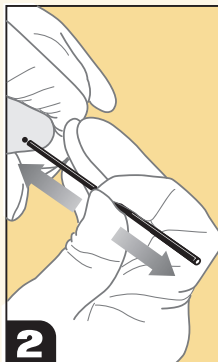
1.800.535.6734  
[www.ramsci.com](http://www.ramsci.com)  
[info@ramsci.com](mailto:info@ramsci.com)

*Draw Safety Into Your Lab<sup>™</sup>*

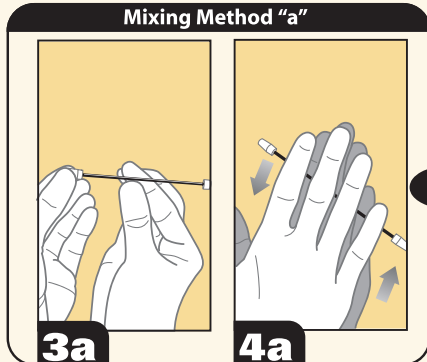
**Instructions**



**1 Collect Specimen**  
Hold the capillary tube close to the puncture site at a horizontal or slight downward angle so that it touches only the blood drop.  
**(230 µL tube)**  
For longer capillary tubes hold the far end between the index and middle fingers (for stability) and the close (near the foot) end between the ring/pinky and thumb.

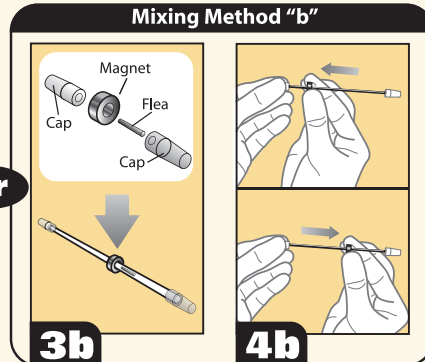


**2 Fill End-to-End**  
Fill the capillary tube. A complete end-to-end fill of the capillary tube is equal to the stated fill volume.



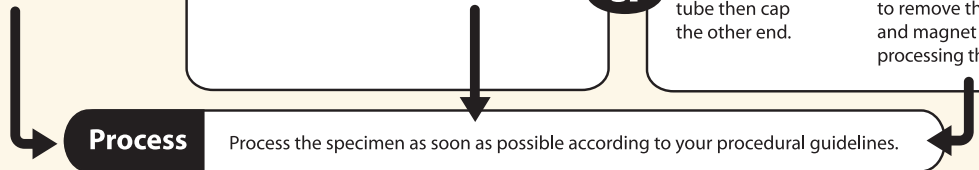
**3a Cap Ends**  
Cap both ends of the capillary tube.

**4a Mix Sample**  
Mix the sample thoroughly by rolling the tube between your fingers or palms.



**3b Insert Flea**  
If a flea is to be used for mixing, cap one end of the tube, insert flea and slide magnet over the tube then cap the other end.

**4b Mix Sample**  
Slide magnet up and down the length of the tube, causing the magnet to move the blood. Remember to remove the flea and magnet before processing the sample.



**SAFE-T-FILL** Blood Gas Capillary Tubes

Reorder #	Description	
06 0185	Blood Gas Capillary Tube 115 µL Balanced Heparin	
06 0186	Blood Gas Capillary Tube 150 µL Balanced Heparin	
06 0187	Blood Gas Capillary Tube 230 µL Balanced Heparin	
06 0005	Blood Gas Capillary Tube 115 µL Sodium Heparin	
06 0007	Blood Gas Capillary Tube 150 µL Sodium Heparin	
06 0009	Blood Gas Capillary Tube 230 µL Sodium Heparin	
06 0402	End Caps for Blood Gas Capillary Tubes	
07 9503	Mixing Fleas for Blood Gas Capillary Tubes	
07 9502	Magnets for Blood Gas Capillary Tubes	

**Product Notes**

- In vitro diagnostic use only
- Single use only
- Non-sterile
- Latex-free
- Storage temp: 4° to 25° C
- 100% Plastic



**1.800.535.6734**  
**www.ramsci.com**  
**info@ramsci.com**