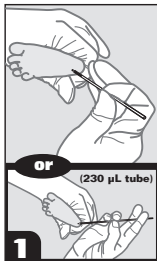


Instructions: SAFE-T-FILL® Blood Gas Capillary Tube

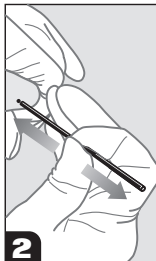


Collect Specimen

Hold the capillary tube close to the puncture site at a horizontal or slight downward angle so that it touches only the blood drop.

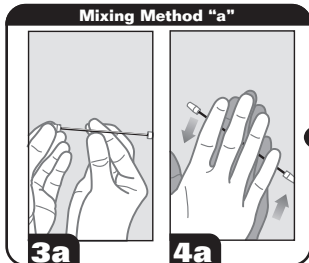
(230 µL tube)

For longer capillary tubes hold the far end between the index and middle fingers (for stability) and the close (near the foot) end between the ring/pinky and thumb.



Fill End-to-End

Fill the capillary tube. A complete end-to-end fill of the capillary tube is equal to the stated fill volume.

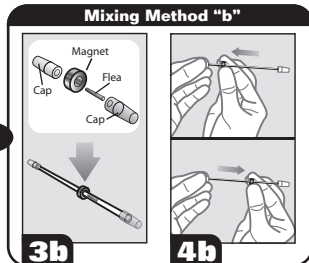


Cap Ends

Cap both ends of the capillary tube.

Mix Sample

Mix the sample thoroughly by rolling the tube between your fingers or palms.



Insert Flea

If a flea is to be used for mixing, cap one end of the tube, insert flea and slide magnet over the tube then cap the other end.

Mix Sample

Slide magnet up and down the length of the tube, causing the magnet to move the blood. Remember to remove the flea and magnet before processing the sample.

Process

Process the specimen as soon as possible according to your procedural guidelines.

RAM
SCIENTIFIC

RAM Scientific Customer Service at
1.800.535.6734 or visit us on the web at
www.ramsci.com

© 2005 RAM Scientific, Inc. All rights reserved.
SAFE-T-FILL® is a registered trademark of RAM Scientific, Inc.